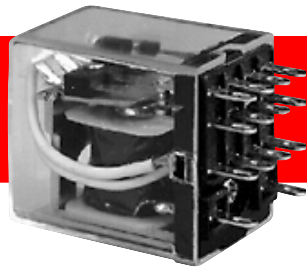
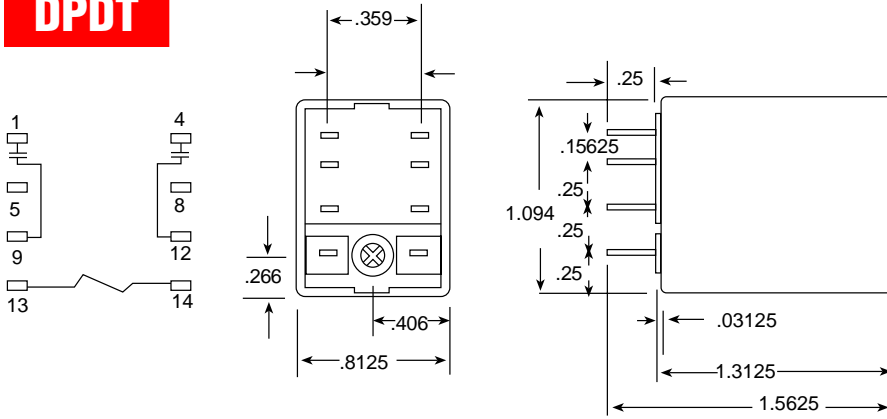


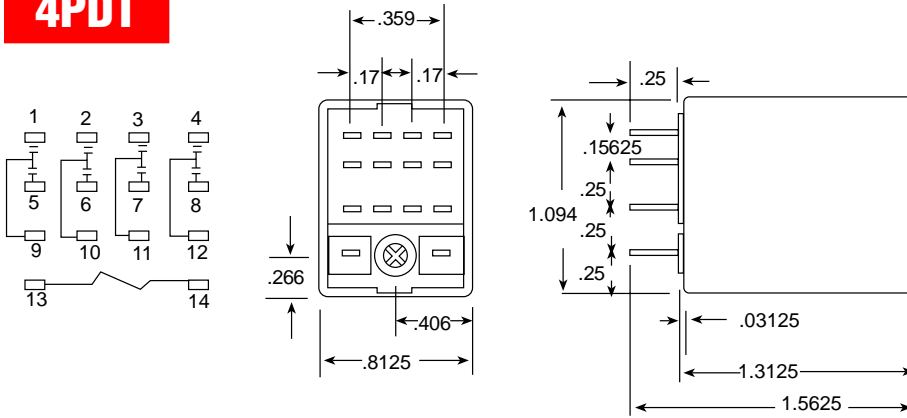
# SKMP



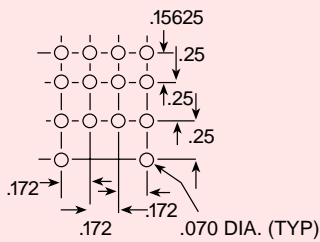
## DPDT



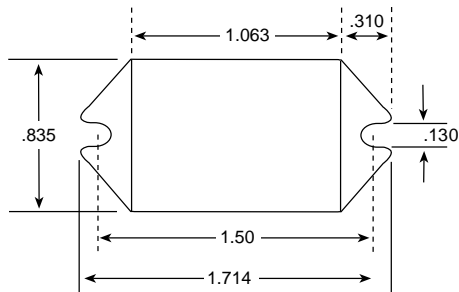
## 4PDT



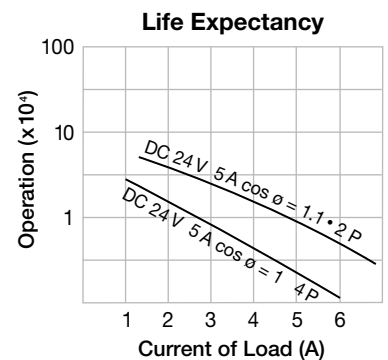
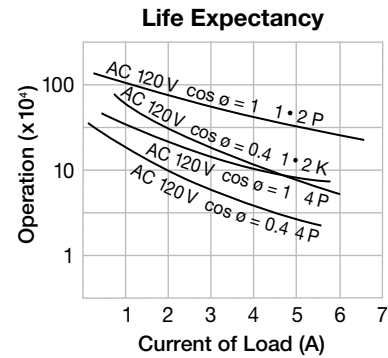
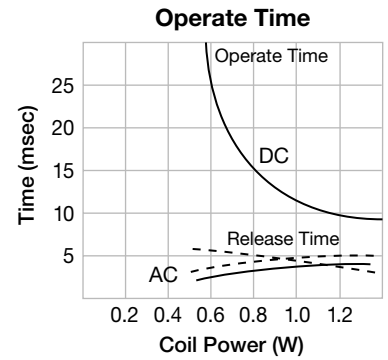
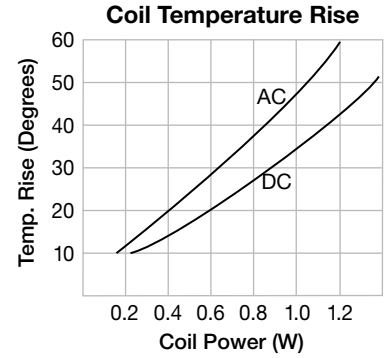
### P/C LAYOUT



## SKMT TAB MOUNT



## Reference Data

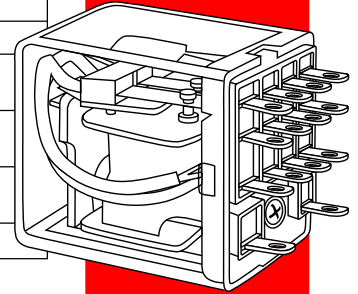


## Performance (At Initial Value)

ITEM	TYPE
	2 Pole / 4 Pole
Contact Resistance	100 mΩ Max.
Operate Time	25 msec Max.
Release Time	25 msec Max.
Dielectric Strength: Between Coil and Contact Between Contacts	AC 1500 V, 50/60 Hz (1 minute) AC 1000 V, 50/60 Hz (1 minute)
Surge Resistance	3000 V (between coil and contacts 1x40 μ sec.)
Insulation Resistance	100 MΩ Min. (500 VDC)
Max. ON/OFF Switching: Mechanically Electrically	240 operations/min. 30 operations/min.
Operating Ambient Temperature	-25°C to +55°C (no water condensation and no water drop)
Operating Humidity	45% to 85% R.H.
Coil Temperature Rise	60° Max. (at rated voltage)
Vibration: Endurance Error Operation	10 to 55 Hz Double Amplitude 1.0 mm 10 to 55 Hz Double Amplitude 1.0 mm
Shock: Endurance Error Operation	100 G Min. 10 G Min.
Life Expectancy: Mechanically Electrically	10,000,000 operations/min. (no load) 100,000 operations/min. (at rated load)
Weight	About 35 grams

# SKMP

**Socket:  
NDSQ-14,  
SI-8, or  
SPB-8**



## Coil Specification (At 20° C)

TYPE	Nominal Voltage (VDC) (VAC)	Nominal Current (mA)		Coil Resistance (Ω) ± 10%	Power Consumption	Pull-In Voltage (VDC)	Drop-Out Voltage (VDC)	Max. Allowable Voltage (VDC)
		50 Hz	60 Hz					
AC Coil	6	220	170	10	About 1.0 to 1.3 VA 60 Hz	85% Max.	30% Min.	110%
	12	110	85	40				
	24	60	45	160				
	48	30	23	600				
	110	14	12	3,400				
	120	13.5	11.5	3,400				
	220/240	6	5	13,600				
DC Coil	6	150		40	About 0.9 W	80% Max.	10% Min.	110%
	12	75		160				
	24	36.9		650				
	48	18.5		2,600				
	110	10		11,000				

## Contact Rating

ITEM	TYPE	
	2 Pole	4 Pole
Contact Capacity Resistive Load (Cos. φ = 1)	AC 120 V 5 A DC 24 V 5 A	AC 120 V 5 A DC 24 V 5 A
Inductive Load (Cos. φ = 0.4 L/R = 7 msec.)	AC 120 V 2 A DC 24 V 2 A	AC 120 V 3 A DC 24 V 3 A
Rated Carrying Current	5 A	5 A
Max. Allowable Voltage	AC 240 V DC 110 V	AC 240 V DC 110 V
Max. Allowable Current	5 A	5 A
Max. Allowable Power Force	600 VA / 150 W	360 VA / 90 W
Referential Minimum Applicable Load	DC 10 V 10 mA	DC 10 V 10 mA
Contact Material	AgCdO	AgCdO

## Ordering Information

SKM P LM G 2C 120VAC

Coil Voltage  
See coil specifications  
for available voltages.  
Other voltages available  
as special orders.

Contact Configuration  
2C - DPDT 4C - 4PDT

Gold Diffused Contacts

Blank - No Options  
M - Manual Actuator L - Neon Lamp  
LM - Lamp and Actuator

P - Plug In T - Tab Mount  
B - PC. Board Terminal

UL #E96834(M) (U.S. & Canada)  
C.S.A. #LR83798-1